

November 2006



65 MEMBERS STRONG



Happy Thanksgiving

May your stuffing be tasty,  
May your turkey be plump.  
May your potatoes n' gravy  
have nary a lump.  
May your yams be delicious,  
May your pies take the prize.  
May your Thanksgiving Dinner  
Stay off of your thighs.

### From The Bridge – Comments From the Commander

The District Fall Conference is behind us. I was a long trip to Richland, Washington. Jay and Maryann Merrill and Gloria and I attended the conference.

Jay went to the educational meeting. He brought back a computer minus the monitor and keyboard for our squadron's education group to use. Steve Tucker, SEO, was happy to receive it and said he had an extra monitor and keyboard.

At the conference we got to meet other squadron members and exchange ideas with each other. The next conference is the spring conference which will be held at Ocean Shores in March, 2007.

I want to thank Albert Foster, Gil Graham and Doug Leeds for bringing in four new members to our squadron. Doug Leeds also signed up a new advertiser for our newsletter for 2007.

Lets bring in some more members

## Happy Thanksgiving

Cdr Bob Lehnert, P phone 379-2610

A boat is said to be "shipshape" when every object that is likely to contribute to the easy handling of the vessel or the comfort of the crew has been put in a place from which it cannot be retrieved in less than 30 minutes.

### PORT OF PORT TOWNSEND

Boat Haven  
Point Hudson

Fuel Dock 103 Hudson St  
Guest Moorage 360-385-2355  
Toll Free 1-800-228-2803  
Travel Lift/ Work Yard  
Laundry/Shower Facilities

### Westside Marine

*Your Boating Experts!*

**Authorized Sales & Service  
Yamaha**

*When You Want The Best*

**Full Line Marine Hardware & Accessories  
(360) 385-1488**

31 Frederick St & Highway 20 Port Townsend, WA 98368

Oh-h-h, look, a new ad!!!

The WORLD'S LARGEST WEBSITE on  
Antique Tractor Parts and Tractor Equipment  
is right here in Port Townsend!! Who knew?

## YESTERDAY'S TRACTORS

Your antique tractor headquarters specializing in all tractors  
made before 1985.

- .Manuals
- .Parts
- .Kits
- .Videos
- .Classified Ads
- .Auctions
- .Hats
- .T-shirts
- .Tips
- .Specs
- .Chat Room
- .Event Calendar
- .Forums
- .Articles
- .Links
- .On Line Store
- .Photos
- .Gifts

[yesterdaystractors.com](http://yesterdaystractors.com)

LADIES, HERE ARE THE TWO RECIPES  
FROM THE OCTOBER POTLUCK.

### Oriental Chicken Cabbage Salad

#### Salad:

1 cabbage shredded, or 1 lb bag shredded cabbage  
1 bunch green onions chopped  
2 pkg ramen soup mix (mushroom or oriental flavor)  
Break up noodles (save flavor packets for dressing)  
4-5 tablespoons sesame seeds, toasted  
3/4 cup slivered almonds, toasted  
Any amt cooked chicken, cut in bite sized pieces

#### Dressing:

combine & shake  
1/4 cup vinegar  
1/2 cup olive oil  
3 tablespoons sugar  
1/2 tsp salt  
1/2 tsp pepper  
Sesame oil to taste  
2 packets ramen soup flavor.

Serve chilled. Salad & dressing can be put together  
ahead of time. Add noodles at last minute. Makes  
a large bowl of salad.

## "EXCELLENCE"

Just maybe the best boatyard around. See the seasoned pros at  
Goldstar Marine for complete services. Renovation or repair, sail  
or motor, gas or diesel, big or small. We'll do the job & do it well.

- .Electrical
- .System design & Installation
- .Paint & refurbishing
- .20,000 sq ft indoor space
- .Repower
- .Mechanical & engineering experts



## GOLDSTAR MARINE

2900 Washington St, Port Townsend WA 98368  
1-888-300-3054 toll free

Jim Maupin, ACMS-CMS  
Certified Marine Surveyor



360-379-1427

Cell 360-301-

291 Cook Ave · Port Townsend, WA  
98368

[jimmaupin@waypt.com](mailto:jimmaupin@waypt.com)

### Orange Jello Fluff Salad (serves 12-16)

1 pkg (6 oz) orange jello  
2 & 1/2 cups boiling water  
2 cans (11 oz each) mandarin oranges (drained)  
1 can (8 oz) crushed pineapple (un-drained)  
1 can (6 oz) frozen orange juice concentrate,  
thawed.

#### Topping:

1 pkg (8 oz) cream cheese, softened  
1 cup cold milk  
1 pkg (3.4 oz) instant vanilla pudding mix

Dissolve jello in water. Stir in fruit and OJ. Coat  
13x9x2" dish with nonstick spray. Add jello mix &  
refrigerate until firm. Beat cream cheese till fluffy.  
Gradually add milk & pudding. Beat till smooth.  
Spread over jello. May be cut into squares for serv-  
ing. Looks nice plated on a lettuce leaf. Can be  
served as salad or dessert.

### ***DO YOU KNOW HOW DESIRABLE YOU ARE?????***

***GIVE A LITTLE OF YOURSELF TO THIS SQUADRON THAT YOU HAVE JOINED AND RECEIVE BACK APPRECIATION, NEW FRIENDS, KNOWLEDGE THAT YOU ARE DOING YOUR PART AND AWARENESS THAT YOU ARE HELPING OUT THOSE WHO ALREADY CONTRIBUTE. WE NEED MORE GIVERS, MOVERS AND SHAKERS TO BE ON COMMITTEES, IN OFFICES, AND SCHEDULING SOCIAL EVENTS. LET'S GIVE BOB A BREAK.***

## Fleet Marine

Complete Marine Service and Do-It-Yourself

Haul Outs, Storage, Marine Shop  
Indoor Paint Shop, Repairs, Brokerage

Point Hudson Marina

419 Jackson · Port Townsend, WA 98368

360-385-4000 · 1-800-952-6962

[www.fleetmarine.com](http://www.fleetmarine.com)

Unique copper/glass bead gifts

[www.foxfieldwoods.com](http://www.foxfieldwoods.com)

Owned by one of your fellow members

Custom orders welcomed

Call **360-808-7628** to order or to arrange  
in-home viewing of products

Garden stakes & ornaments  
Veggie markers, bookmarks & more

### Education Corner

Students taking the Seamanship Course taught by Don Lee just finished the test last week and are breathlessly awaiting the grades. These same 11 students, are continuing their education in the Boat Handling Course, taught by Chelcie Liu. The 4 week classes have been worth attending and the graduates' names will be published in a future newsletter.

**Advanced Piloting Course** -11 weeks beginning November 22 and held each Wednesday from 7-9pm at Skookum Building in the Boat Haven. This class will be taught by Mitch and Sandy Carroll.

**Boat Engine Maintenance Series** - begins in January and will be taught by Steve Tucker. Dates to be announced. This class is 8-10 weeks long.

Steve Tucker, Education Officer of our Squadron, is looking for members that would like to help Steve teach basic boating next year. Washington State will be requiring licensing for boaters beginning in 2007. The power squadrons across Washington are preparing for the influx of students and in that way fulfill one of our main goals...education. You can reach Steve at 360-385-0447.

### Calendar of Events

**Nov 3,4,5 - Razor Clam Dig - Roosevelt Beach**

**Nov 14 Squadron Executive Meeting 7pm  
Firehouse**

**Nov 21 Squadron Thanksgiving Potluck &  
Meeting 6pm Cape George Fire Station  
(bring a bag of groceries for the food  
drive)**

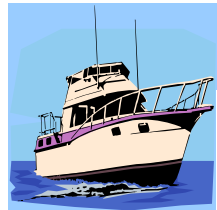
**Patricia Weedman & Kathy Tucker are putting together an outing that will coincide with the Seattle Boat Show in January. Interested? If you are willing to volunteer a 2 hour shift at the Power Squadron Booth in the Boat Show, you can get in for free. Contact Ruth Kohl,385-2610**

Thanks to Aaron Benson for being our guest speaker at the October Squadron meeting. Aaron is a member of the Port Ludlow and Jefferson County Amateur Radio clubs. He enlightened us on the radio spectrum and radio types.



Jefferson County Marine Science Center contacted our squadron for help. They would like us to check docks for creosote. Call Bob Lehnert for more information.

Remember we will be having nominations the first of the year to fill offices, including that of commander. Refer to bottom of page 2



## SHORELINE

MARINE DIESEL

Specializing in Preventative  
Maintenance & Failure Analysis

360-379-8344

2730-B Washington St · Port Townsend

## Westbay AUTO PARTS

2321 Sims Way Port Townsend WA 98368

360-385-3476

- Largest & complete line of domestic & import parts
- Auto paint & body supplies
- Complete machine shop service
- Hard to find parts locator service

Open 7 Days

Kevin Amo

## WEST MARINE

Has a great selection of quality products for  
powerboats and sailboats  
Discount Prices Everyday

Friendly, knowledgeable staff  
2428 Washington Street  
360-379-1612

Remanufactured • Starters  
Alternators & Generators for  
Auto • Truck • Marine • Industrial

Colin Anderson  
**Townsend Electric**

360-385-3780

2227 Washington St • Port Townsend, WA 98368

### Your 2006-2007 Bridge Officers

Commander  
Bob Lehnert, P  
360-379-2610

[pointwilson1@msn.com](mailto:pointwilson1@msn.com)

Executive Officer  
Ruth Kohl, SN  
360-385-7467

[rkohl@olympus.net](mailto:rkohl@olympus.net)

Education Officer  
Steve Tucker, P  
360-385-0447

[tuckerworks@cablespeed.com](mailto:tuckerworks@cablespeed.com)

Administrative Officer  
Vacancy

Secretary  
Maryann Merrill, P  
360-379-1608

[mcmerrill1@msn.com](mailto:mcmerrill1@msn.com)

Treasurer  
Doug Leeds, P  
360-385-6109

[dougleeds33@msn.com](mailto:dougleeds33@msn.com)

OUR NEXT MEETING IS

**TUESDAY, NOVEMBER 21, 2006.**

**Remember, it will be held at the Cape George  
Fire House on Cape George Rd this month.  
Other things to remember:**

**#1) bring a potluck dish that will go with the  
ham the Squadron is providing.**

**#2) Bring a bag of food for the food drive that  
is held in early December.**

**#3) bring \$\$ to participate in the drawing,**

**#4) Doug Leeds - remember to bring the raffle  
tickets this time**

**POTLUCK BEGINS AT 6PM**

**MEETING BEGINS AT 7PM**

Larry and Barbara Gauer were having an argument about who should brew the coffee each morning.

Barbara said, "You should do it, because you get up first and then we don't have to wait as long to get our coffee."

Larry said, "You are in charge of the cooking around here and you should do it because that is your job, and I can just wait for my coffee."

Barbara replies, "No, you should do it, and besides, it is in the Bible that the man should do the coffee."

Larry replies, "I can't believe that, show me!"

So she fetched the Bible and opened the New Testament and shows him at the top of several pages, that it indeed says: "HEBREWS"

## A Thanksgiving Prayer

I GIVE THANKS for the sweetness of life, for the LOVE OF MY FAMILY, and the laughter of my children. I'M THANKFUL TO BE LIVING IN FREEDOM. I am grateful for my health, wealth, my potential and the COMFORT OF MY HOME. I give thanks for the generosity of neighbors, the smiles of my friends and earth's boundless beauty. I REJOICE IN THE SINGING BIRD, the rainbow's promise & a SKY FULL OF STARS. Gratitude has replaced anxiety because "I HAVE RECEIVED MORE THAN I COULD EVER ASK FOR".

Editors note: I had fun one year composing this little prayer and copying it on yellow parchment then wrapping it around vigil candles and setting them in a long line on our Thanksgiving table.

## DOCKLINES

For docklines, sailors and powerboaters alike need a rope that stretches, according to Don Casey, author of This Old Boat. And plain old nylon is the best. Nylon is available in both braided and three-strand twist construction. Each has its advantages. Braided looks "dressy", has better abrasion resistance than three-strand and typically it is slightly stronger. Braided line can be a good choice for tying up in your home dock, but because braided lines have a tendency to snag on rough pilings, they may not be the best choice for traveling docklines. The main advantages of three-strand nylon for docklines are that it doesn't snag, is easy to splice and is considerably less costly than braided rope. Three-strand also has the significant advantage of being stretchier than braid.

**What size?** Since larger diameter line takes longer to chafe through, a case might be made for selecting the largest diameter that will fit your cleats. But as the line diameter gets larger, it also becomes less elastic, making the "right" line diameter a bit of a catch-22. The diameters shown below should deliver both sufficient strength and elasticity:

3/8" diameter for boat length up to 25', 1/2" diameter for boat length up to 35', 5/8" diameter for boat length up to 45', 3/4" diameter for boat length up to 55' and 7/8" diameter for boat length up to 65'. (continued next page)

## The Motley Crew



Barbara & Larry Gauer dock their 37' trawler "Amber Rose" at Pleasant Harbor Marina in Brinnon.



Right to left– Bridget Browning & Albert Foster owners of "Pleiades", a 40'LOD Chapelle Pinky Schooner of Hadlock and friend, Jim Watson-Gove, owner of a Colorado 25' sailboat in Port Ludlow.



Bob Stebbins & Marian Wiederrich are owners of the sailboat "Royal Ann", kept at Cape George.

## Docklines (cont)

**What length?** For docklines that are a fixture for your permanent slip, work out the appropriate lengths using old line or light stuff (flag halyard), making allowances for eye splices, then make up your new lines to those lengths. Nothing is more convenient than pulling into your slip and simply dropping eyes over the mooring cleats. If your dock is fixed, not floating, be sure to leave a little extra length for unusually high or low tides. For a set of docklines that travel with the boat, lines equal to the length of the boat are the best. It is essential for spring lines to be this long. You can get away with shorter bow and stern lines, but some captains don't like to sort through docklines to place a short one here and a long one there. In a rush, you can grab the one on top and always know it will be long enough. The inconvenience of a line that is too long is far less than one that is too short.

**Eye splice** All docklines should have an eye splice in one end. For permanent docklines, the eye will be in the boat end of the line and it should be just large enough to fit over the horns of the boat's mooring cleats. A small eye will be unlikely to come loose, but for complete security you can feed the eye under an open based cleat before looping it back over the horns. The eye on transient docklines generally goes ashore so you can adjust the line of the boat from on board. Twelve inches is a good eye size, making it easy to pull the line through the eye to form a loop. A knot, by the way, is a poor substitute for a proper splice. A bowline, for example, reduces the breaking strength of a line by about 40% while a splice retains 95% of the rope's strength.

**Chafe protection** Dockline failures are almost always a result of chafe. Unfortunately it is nearly impossible to rig docklines so that they never rub against the dock or the boat. Protect your investment by sliding a foot or two of heavy duty hose over each line and tying it in position to take the abrasion.

## Admiral Ship Supply, Inc.

**Dave Carruthers · Steve Brown**  
Owners with over 40 years experience

305 Tenth St · Port Townsend, WA 98368  
**360-379-9921 · toll free 1-866-611-0984**  
[www.admiralshipsupply.com](http://www.admiralshipsupply.com)

## AUTOWORKS

auto repair & service  
Mark & Nan DuMond, owners

2313 Third St  
(behind WestBay & Les Schwab)  
Port Townsend, WA 98368

360-385-5682

## HaHa, HoHo, Giggle, Snort & Chuckle

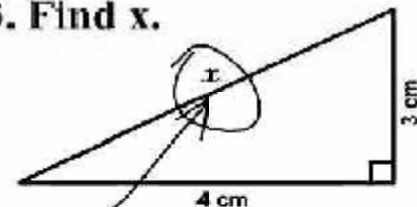
### Reasons Not To Mess With A Child

One day a little girl was sitting and watching her mother do the dishes at the kitchen sink. She suddenly noticed that her mother had several strands of white hair and she inquisitively asked, "Why are some of your hairs white, Mom?" "Everytime you do something wrong and make me cry or unhappy, one of my hairs turns white." The little girl thought about this for a while and then said, "Momma, how come ALL of grandma's hairs are white?"

A kindergarten teacher was observing her classroom of children while they were drawing. She would occasionally walk around to see each child's work. As she got to one little girl, she asked what the drawing was. The girl replied, "I'm drawing God." The teacher paused and said, "But no one knows what God looks like." Without missing a beat, or looking up from her drawing, the girl answered, "They will in a minute."

Answer on a blond's geometry test

3. Find x.



Here it is